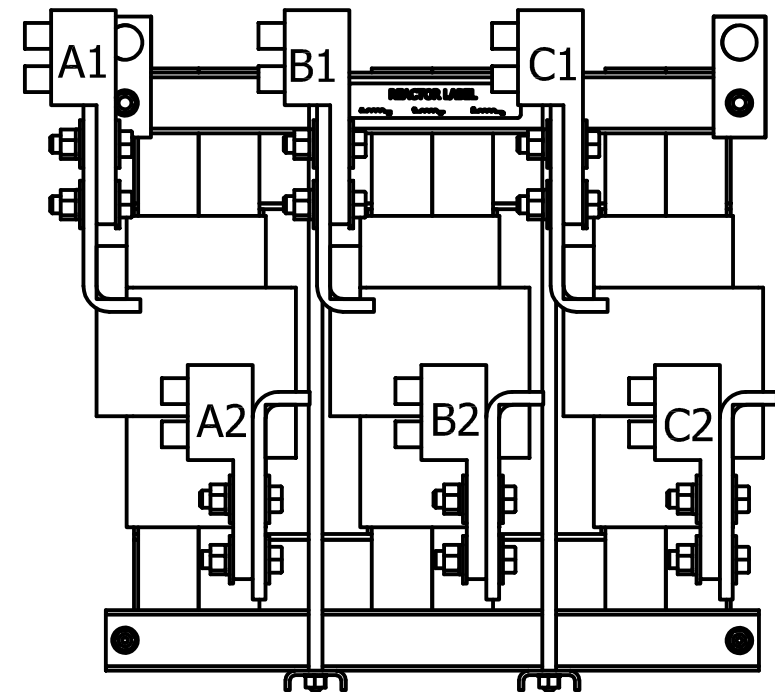
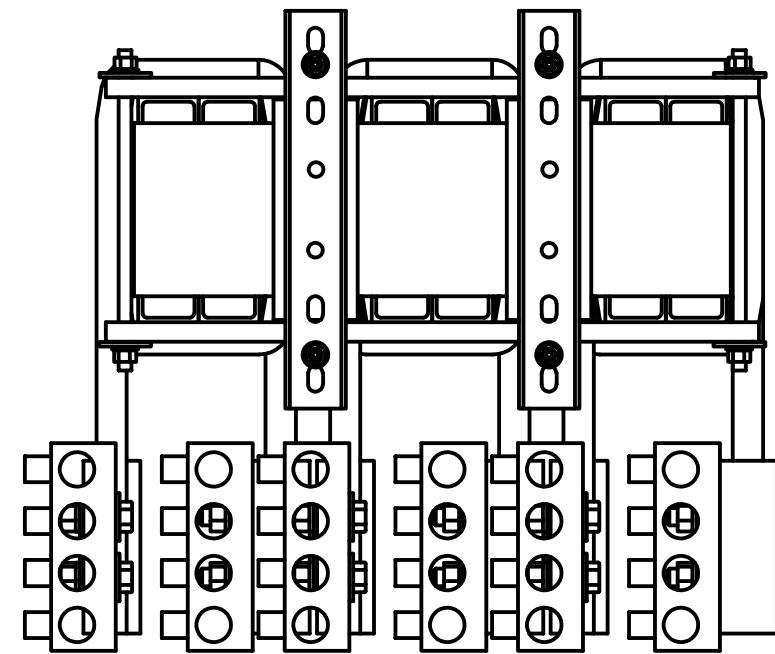


4

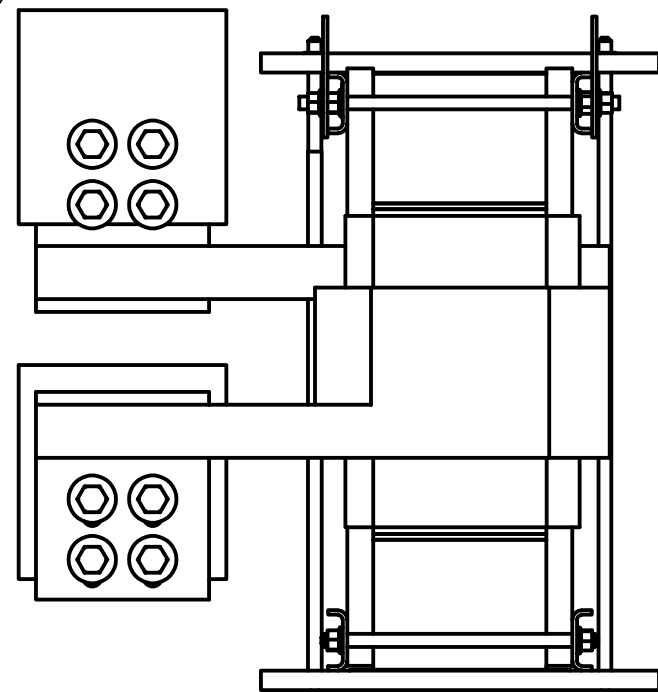
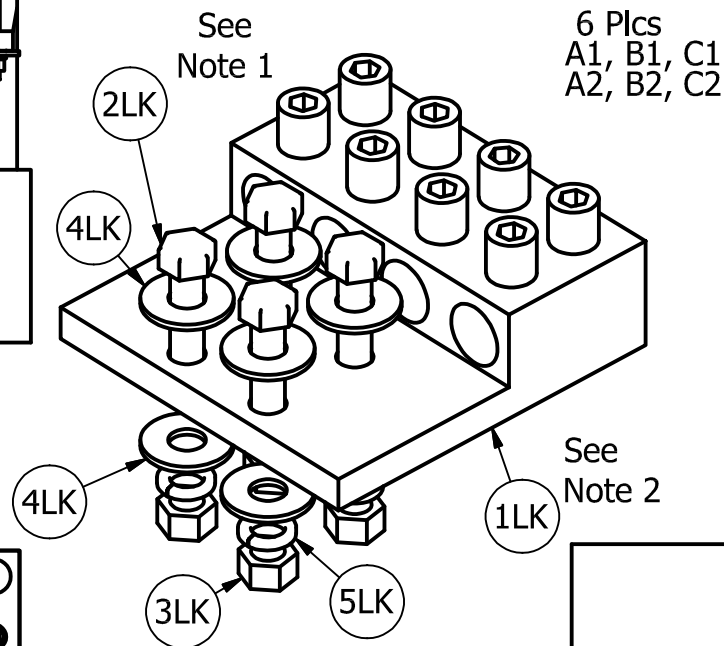
3

2

1



| Parts List |                           |          |        |
|------------|---------------------------|----------|--------|
| TCI Part # | Description               | Quantity | Item # |
| 24873      | Lug Four 800 kcmil        | 6        | 1LK    |
| 10251      | Hex Hd Bolt 1/2-13 X 2 In | 24       | 2LK    |
| 1610       | Nut 1/2-13                | 24       | 3LK    |
| 1512       | Flat Washer 1/2"          | 48       | 4LK    |
| 1511       | Split Lock Washer         | 24       | 5LK    |




| Table T4A4-800N |                   |                |          |                      |
|-----------------|-------------------|----------------|----------|----------------------|
| Item ID         | Conductor Range   | Bolt/Stud Size | Hex Size | Tightening Torque    |
| T4A4-800N       | 800kcmil-300kcmil | 1/2            | 1/2      | 500 in-lb (56.5 N-m) |

\* T4A4-800N  
 \* CSA Certified.  
 \* UL 486A/B Listed, UL File E6207  
 \* Must be mounted with a minimum of 4 bolts

Notes:  
 1.) Torque bolt (Item #2LK) to 450 in-lb (50.8 N-m).  
 2.) To prevent lug from rotating place lug on underside of tab as shown.

Follow NEC guidelines to determine acceptable wire ampacity requirements.

|    |          |      |    |                              |  |   |
|----|----------|------|----|------------------------------|--|---|
|    |          |      |    | TOLERANCES (EXCEPT AS NOTED) |  |  W132 N10611 Grant Drive<br>Germantown, WI 53022 |
|    |          |      |    | DECIMAL                      |  |   |
|    |          |      |    | .XX ± .25                    |  | Lug Kit, 4-800MCM-300   |
|    |          |      |    | .XXX ± .10                   |  |   |
|    |          |      |    | FRACTIONAL                   |  | DRN. BY: JRN<br>DATE: 9/11/17<br>LK18-Dwg   |
|    |          |      |    | ± 1/16                       |  |   |
|    |          |      |    | ANGULAR                      |  | SCALE: B<br>APRVD:<br>SIZE: B<br>SHT.1 OF 1   |
|    |          |      |    | ± 1°                         |  |   |
| NO | REVISION | DATE | BY |                              |  |   |

4

3

2

1